



CREATIVE
WASTE
SOLUTIONS, INC.

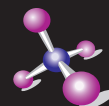


2011-2012

PRODUCT CATALOG



CREATIVE
AIR
SOLUTIONS, INC.



Epic Scientific™
Where Innovation, Quality and Service Meet

Disclaimer: Occasionally, there may be misprints or errors in our print and online catalogs. Creative Waste Solutions, Inc. reserves the right to correct the misprint or withdraw the offer. Specifications, colors, legal restrictions, prices and availability are subject to change at any time without notice.

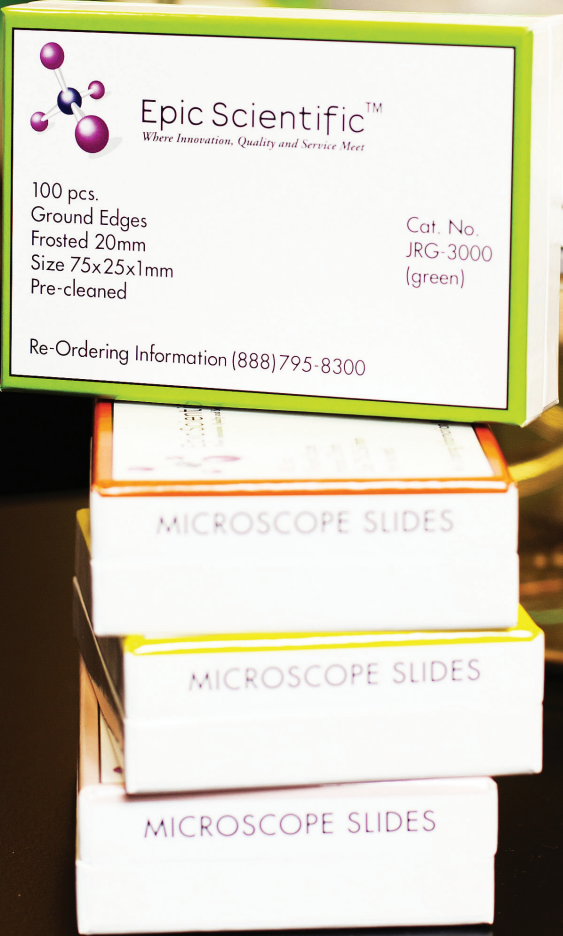


TABLE OF CONTENTS

Alcohol Recycling System	2
Formalin Recycling System	3
Xylene Recycling Pads	4
Air Filtration System	5
Replacement Filter	6
Pure Ayre	6
Slides	7-8
Cover Slips	8
Reagents	9-10
Chemicals	11-15
Pre-Filled Specimen Vials	13
Tissue Marking Dyes	15
Epi-Mount	16
Frozen Section Medium	16
Epi-Cool	16
Microtome Blades	17
Grossing Blades	17
Specimen Bags	17
Marking Pens	18
Cassettes	18
Histo-Cool	19
Sponges	20
Slide Folder	20
Slide Mailers	20
Safety Cube	21
Gloves	21
Face Shield	21
Fan Pads	21
Soap	22
Special Stains	23-27
SlydEater	28
Vyleater	28

10848 SW Tualatin Sherwood Road Phone: 888-795-8300
Tualatin, OR 97062 Fax: 503-963-8047
www.cwsincorp.com



CREATIVE WASTE SOLUTIONS, INC.

Creative Waste Solutions, Inc. is an Oregon based company founded in 1999 after years of vision, product innovation, testing and development.

At Creative Waste Solutions, Inc. (CWSI), we are devoted and dedicated to bringing each of our customers the best possible solution in managing alcohol, xylene and formalin waste streams. We make this possible by the use of filtration, absorption, green chemistry and gravity. We guarantee that each customer using our recycling systems will save valuable time, money, energy and effort with the added benefit of knowing they are helping to save the environment and contributing positively to their community.

CWSI decided to develop an alternative method of recycling these problematic waste streams consisting of alcohol, xylene and formalin in Histology, Cytology and other Life Science fields. The conventional methods of drain disposal and/or paying to haul away these waste streams are costly, time consuming and can cause environmental harm. Our vision was to handle these waste streams differently, like none other before.

The Epic Scientific trademark brand was created to identify our consumable/disposable products used in the everyday laboratory setting. Some of the products that we offer are listed below. This product line is constantly expanding for your continued benefit now and into the future. Our products are designed to minimize your costs while exceeding the quality of your products currently being used.



Rex Johnson, President

CONTACT US



PHONE: 888-795-8300



FAX: 503-963-8047



EMAIL: CWSINCORP.COM



Alcohol Recycling Systems (ARS)

Simply pour dirty alcohol into the top of the Alcohol Recycling System (ARS) and clean usable recycled alcohol, at the same concentration, comes out at the bottom of the Alcohol Recycling System.

- Are guaranteed to save your lab money, time, energy, and effort all while helping your community's environment.
- Are safe, simple and easy to use, all while requiring very little lab space.
- Run on gravity, can be used anywhere, no electricity or heating of alcohol required.
- Are customizable to meet your specific lab needs.
- Recycle dirty alcohol with no capital outlay.
- Recycled product is the same concentration and volume of alcohol recycled through the system.

Contact us and let us help you determine which size of recycling system is right for your lab.

ITEM NUMBER	DESCRIPTION
ARS-1G	Alcohol Recycling System 1 Gallon
BTARS-001	Benchtop Alcohol Recycling System
ARS-3G	Alcohol Recycling System 3 Gallon
ARS-30G	Alcohol Recycling System 30 Gallon



BENCHTOP SYSTEM
Dimensions: 14" x 14" x 21"



1 GALLON SYSTEM
Dimensions: About 1 square foot of space



3 GALLON SYSTEM
Dimensions: 22" x 22" x 55"

Hydrometer

Glass instrument used to measure the density/concentration of your recycled alcohol.

Hydrometer Jar

Graduated Plastic cylinder, used with the Hydrometer to measure the density of your recycled alcohol.

ITEM NUMBER	DESCRIPTION
HDM-001	Hydrometer
HYD-Jar	Hydrometer Jar



Formalin Recycling System (FRS)

The purpose of the Formalin Recycling System (FRS) is to recycle formalin without removing the buffered salts or altering the formalin concentration. Simply pour in dirty 10% Neutral Buffered Formalin in the top and get back clean, recycled 10% Neutral Buffered Formalin at the same volume, concentration and pH at the bottom of the Formalin Recycling System.

- Are guaranteed to save your lab money, time, energy, and effort all while helping out your community's environment.
- Are safe, simple and easy to use, all while requiring very little lab space.
- Run on gravity, can be used anywhere, no electricity or heating of formalin required.
- Are customizable to meet your specific lab needs.
- Also recycles alcoholic and zinc formalin.
- Recycle dirty formalin with no capital outlay.
- Recycled product is the same concentration, pH, and volume of formalin recycled through the system.

Contact us and let us help you determine which size of recycling system is right for your lab.

ITEM NUMBER	DESCRIPTION
FRS-1G	Formalin Recycling System 1 Gallon
BTFRS-001	Benchtop Formalin Recycling System
FRS-3G	Formalin Recycling System 3 Gallon
FRS-30G	Formalin Recycling System 30 Gallon



BENCHTOP SYSTEM
Dimensions: 14" x 14" x 21"



1 GALLON SYSTEM
Dimensions: About 1 square foot of space



3 GALLON SYSTEM
Dimensions: 22" x 22" x 55"

Formalin Assay Kit

Make sure your recycled formalin is the correct pH and formalin concentration with our all-in-one Formalin Assay Kit.

ITEM NUMBER	DESCRIPTION
AKT-001	Formalin Assay Kit



Xylene Recycling Pads (XRP)

ITEM NUMBER	DESCRIPTION
XRP-001	Xylene Recycling Pads (XRP)

The goal of the Xylene Recycling Pads (XRP) is to allow extended use of your xylene. The XRP's help to remove stains, dyes, alcohol, and water from xylene and xylene substitutes. The XRP's were designed to be reusable and long lasting. Simply remove the XRP from the xylene, and lay it under your hood to dry overnight. Place the second set of Xylene Recycling Pads in your xylene and repeat these steps. The XRP's work on the stain line while specimens are being processed. The XRP's are available for all brands and styles of automated and hand staining systems.

- Guaranteed to save money, time, energy, and effort in you lab all while helping out your community's environment.
- Safe, simple and easy to use, and requires very little lab space.
- Customized to meet your specific lab needs.



Air Filtration System (AFS)

ITEM NUMBER	DESCRIPTION
AFS-001	Air Filtration System



Think about it ... What do you do more than anything else all day long? You breathe. So why not breathe the cleanest air you possibly can, especially in the laboratory setting? Creative Air Solutions, Inc. has specifically designed the Air Filtration System (AFS) to help minimize your employees' exposure to fumes and odors generated from chemicals caused by the everyday use of solvents, such as, alcohol, xylene, toluene and formalin. The AFS has a small footprint, it measures 23 inches high and 11 inches wide. It requires very little space and is designed to be placed on the floor or counter.

- Improves air quality in your lab.
- Minimizes hazardous fumes in your lab.
- Works quietly and efficiently 7 days a week, 24 hours a day.
- Aids with respect to compliance issues.

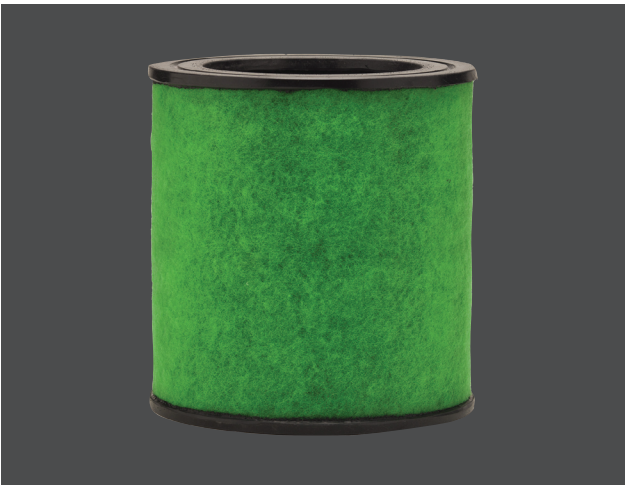
See next page for AFS Replacement Filter.



Air Filtration System Replacement Filter (AFSRF)

The Air Filtration System Replacement Filter is specifically designed to help capture and absorb harmful chemical fumes and vapors. The unique technology of the carbon based filter is designed to absorb these chemicals and vapors, not allowing them to be re-circulated back into the work place.

ITEM NUMBER	DESCRIPTION
AFSRF-001	Air Filtration System Replacement Filter



Pure Ayre

Pure Ayre is a product composed of over 100 plant enzymes. When working together these natural enzymes form a bio-catalytic enzymatic reaction which helps to destroy chemicals that cause fumes and odors generated with the everyday use of solvents in the lab. Pure Ayre has an MSDS of 0-0-0 and is plant, animal and human friendly. For use in hospitals, clinics, labs, medical offices and the entire Life Sciences field. Pure Ayre is 100% readily biodegradable and the only food-grade odor eliminator available.

Call for a sample

ITEM NUMBER	PURE AYRE
PA-04	4 Ounce
PA-22	22 Ounce
PA-01	1 Gallon



Regular Slides

Epic Scientific is pleased to offer our uniquely packaged line of EPIC regular microscope slides. These slides are exceptionally clean, consistent and made of the highest quality white borosilicate glass. Our slides are available in eleven distinct colors. Edge finishes include slightly ground 135° and 90° corners. Our slides are perfect for all of your manual and automated instrumentation needs. Epic Slides come conveniently packaged in boxes of 100 pieces, 30 boxes per case, cases of 3,000 slides. Available in quantities of 100 pieces. **Call for a sample**

ITEM NUMBER	COLOR	CASE QTY
JRW-3000	White	3000 pieces
JRB-3000	Blue	3000 pieces
JRG-3000	Green	3000 pieces
JRP-3000	Pink	3000 pieces
JRY-3000	Yellow	3000 pieces
JRO-3000	Orange	3000 pieces
JRL-3000	Lavender	3000 pieces
JRA-3000	Aqua	3000 pieces
JRT-3000	Tan	3000 pieces
JRSH-3000	Shellfish	3000 pieces
JRSL-3000	Silver	3000 pieces



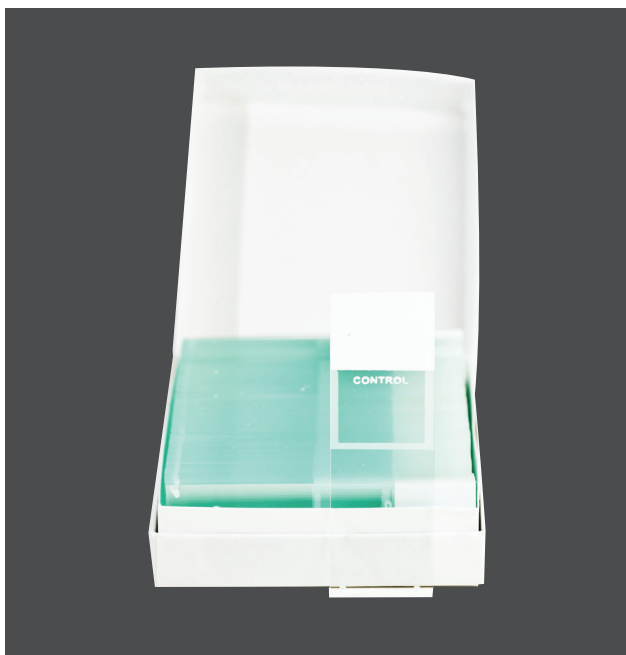
Charged Slides

Epic Scientific is proud to offer our line of +EPIC+ charged microscope slides. The innovative process with which these slides are coated creates a uniform positive coating across the surface, allowing superior tissue adhesion. Our charged slides are offered in eleven distinct colors. Edge finishes include slightly ground 135° and 90° corners. These charged slides are perfect for all your H&E, special stains and IHC needs. +EPIC+ slides come conveniently packaged in boxes of 100 pieces, 30 boxes per case, cases of 3000 slides. Available in quantities of 100 pieces.

Call for a sample

ITEM NUMBER	COLOR	CASE QTY
EW-3000	White	3000 pieces
EB-3000	Blue	3000 pieces
EG-3000	Green	3000 pieces
EP-3000	Pink	3000 pieces
EY-3000	Yellow	3000 pieces
EO-3000	Orange	3000 pieces
EL-3000	Lavender	3000 pieces
EA-3000	Aqua	3000 pieces
ET-3000	Tan	3000 pieces
ESH-3000	Shellfish	3000 pieces
ESL-3000	Silver	3000 pieces





Charged Control Box Slides

Charged Control Box Slides come standard with white frosted ends and 90° corners. Offered in 3/4" and 1" white frosted ends. Charged Control Box Slides are available in quantities of 100 pieces.

Call for a sample

ITEM NUMBER	COLOR	CASE QTY
EWBC-3000	White Box	3000 pieces
ERBC-3000	Red Box	3000 pieces

Cover Slips

Manufactured from clear white glass, our cover slips are exceptionally clean, perfectly flat and do not stick together. All cover slips are uniform in size and thickness. Cover slips are packaged vertically for easy handling, ideal for manual or automated cover slipping applications. Cover slips come packaged in sturdy re-sealable plastic cases containing 200 pieces each, 1000 pieces per case. Epic Scientific offers eight different sizes to suit your specific needs.

Call for a sample

ITEM NUMBER	SIZE	CASE QTY
CS-1818	18x18	1000 pieces
CS-2222	22x22	1000 pieces
CS-2432	24x32	1000 pieces
CS-2436	24x36	1000 pieces
CS-2440	24x40	1000 pieces
CS-2450	24x50	1000 pieces
CS-2455	24x55	1000 pieces
CS-2460	24x60	1000 pieces





Hematoxylin GX3

Hematoxylin GX3 is a progressive hematoxylin that does not contain mercury and does not require filtering prior to use. Hematoxylin GX3 is an excellent nuclear stain for routine hematoxylin and eosin staining, frozen section stains and IHC. Hematoxylin GX3 provides unsurpassed quality that produces consistent staining with sharp and crisp delineation of nuclear chromatin. **Call for a sample**

ITEM NUMBER	DESCRIPTION	QTY
HEM-L	1 liter	1 bottle
HEM-C	Case	4 bottles

Eosin-Y EX1

Eosin-Y EX1 is an acid alcoholic Eosin-Y solution that produces exceptional differentiation and contrast between cytoplasmic components and nuclei. Eosin-Y EX1 stains cytoplasm various shades of pink and red. **Call for a sample**

ITEM NUMBER	DESCRIPTION	QTY
EOS-L	1 liter	1 bottle
EOS-C	Case	4 bottles



Bluing Reagent BX1

Bluing Reagent BX1 is a stable buffer with a pH of 8. It is not a concentrate and requires no dilution. BX1 facilitates the staining intensity of Hematoxylin GX3 to produce sharp and crisp delineation of nuclear chromatin. The buffer components maintain a consistent pH for prolonged use and high slide input.

Call for a sample

ITEM NUMBER	DESCRIPTION	QTY
BLU-L	1 liter	1 bottle
BLU-C	Case	4 bottles



Clear View CV1

Clear View CV1 is designed to remove any non-specific staining of hematoxylin from tissue and slide, resulting in unsurpassed cell detail and transparency. CV1 is an aqueous concentrate that can be diluted to produce custom performance on auto-stainers. This aqueous based product has a slow evaporation rate, resulting in consistent performance unlike competitive products that are alcohol-based.

Call for a sample

ITEM NUMBER	DESCRIPTION	QTY
CV-L	1 liter	1 bottle
CV-C	Case	4 bottles

Xylene (Reagent Grade)

Epic Scientific's Xylene is refined to the level most appropriate for Histological and Cytological purposes. It is miscible with alcohols and provides excellent clearing to produce the correct refractive index for mounting media compatible with xylene. It is compatible with all commercial closed and open automatic processing machines.

ITEM NUMBER	QTY
XYL-100	1 gal
XYL-400	4 gal / case



Epi-Dip 3™

Epi-Dip 3™ stain kits are superb, versatile, and rapid Romanowsky stains for a variety of cell preparations. Foremost they are designed for air-dried peripheral blood smears. Leukocytes show excellent nuclear and cytoplasmic staining. Blasts display distinct nuclear detail with pale blue nucleoli. Immature granulocytes show bright azureo-pholic granules and erythrocytes are orange-red. This stain kit is also useful for tissue imprints and cytospin preparations. Neoplastic cells generally show dark purple nucleochromatin with light blue nucleoli.

ITEM NUMBER	QTY
EPD-003	3 gal / case



Isopropyl Alcohol (Reagent Grade)

Our Isopropyl Alcohol is provided at the highest purity and quality standards required for Histology and Cytology laboratories. Our Isopropyl Alcohol is analyzed by lot and has ultra-low water and acetone content.



ITEM NUMBER	DESCRIPTION	QTY
ISP-101	100%	1 gal
ISP-104	100% case	4 gal / case
ISP-105	100% 5 gallon cube	cube
ISP-951	95%	1 gal
ISP-954	95% case	4 gal / case
ISP-955	95% 5 gallon cube	cube
ISP-801	80%	1 gal
ISP-804	80% case	4 gal / case
ISP-805	80% 5 gallon cube	cube
ISP-701	70%	1 gal
ISP-704	70% case	4 gal / case
ISP-705	70% 5 gallon cube	cube

Acetone (Reagent Grade)

Acetone is a common lab chemical used in some procedures as a tissue dehydrant and fixative. Our Acetone is reagent grade to ensure its quality for all histology uses.

ITEM NUMBER	QTY
ACT-100	1 gal
ACT-400	4 gal / case
ACT-500	5 gal cube

Toluene (Reagent Grade)

Toluene is a common lab chemical often used as a clearing reagent. It is used in cover slipping, and paraffin clearing as well as many other laboratory uses. Our Toluene is reagent grade to ensure its quality for all histology uses.

ITEM NUMBER	QTY
TOL-100	1 gal
TOL-400	4 gal / case
TOL-500	5 gal cube

Epic-Clear (Xylene Substitute)

Epic-Clear is a clearing agent that is used to replace xylene in both processing and staining applications. Epic-Clear is not neurotoxic like xylene and is environmentally preferable in its usage and disposal. In most Histology and Cytology laboratories, Epic-Clear can be substituted for xylene without any procedural changes being made.

ITEM NUMBER	QTY
EXS-100	1 gal
EXS-400	4 gal / case



Pre-filled Specimen Vials

Eliminate hassle and make your job in the laboratory a little easier. No longer will bottles have to be counted and sent to your clients in plastic bags, minimizing labor and leakage. Conveniently located on every bottle are designated writing areas for Patient ID, Surgical Site, Doctor and Date of Sample. Our vials are available in six different sizes ranging from 7 ml to 120 ml. *Custom labeling also available.*

ITEM NUMBER	SIZE	BOX QTY	CASE QTY	PIECES
PFV-07	7 mL	n/a	980 pieces	980 pieces
PFV-20	20 mL	32/box	8 bx/case	256 pieces
PFV-40	40 mL	32/box	8 bx/case	256 pieces
PFV-60	60 mL	32/box	8 bx/case	256 pieces
PFV-90	90 mL	24/box	8 bx/case	192 pieces
PFV-120	120 mL	16/box	6 bx/case	96 pieces



Alcohol Reagent Grade

Alcohol provided by Epic Scientific is of the highest purity and quality standards required for Histology and Cytology Laboratories. This is alcohol designed for the absolute alcohol stations on processors and in staining sequences. Dehydration on tissue processors and in staining sequences is maximized with this alcohol. Epic Scientific uses only 200 Proof Ethyl Alcohol and denaturants which do not interfere with staining or processing. ****Also available at 95%, 80% and 70%.**

ITEM NUMBER	DESCRIPTION	QTY
ALC-101	100%	1 gal
ALC-104	100% case	4 gal / case
ALC-951	95%	1 gal
ALC-954	95% case	4 gal / case
ALC-801	80%	1 gal
ALC-804	80% case	4 gal / case
ALC-701	70%	1gal
ALC-704	70% case	4 gal / case



Methyl Alcohol (Reagent Grade)

Epic Scientific's Methyl Alcohol is provided at the highest purity and quality standards required for Histology and Cytology laboratories. Our Methyl Alcohol is analyzed by lot to assure that you receive the highest grade possible.

ITEM NUMBER	QTY
MTA-101	1 gal
MTA-104	4 gal / case
MTA-105	5 gal cube

10% Zinc Formalin (Buffered)

10% Zinc Formalin is prepared to serve as an ideal fixative for routine light microscopy. It has the non-coagulant fixative qualities of formalin and the coagulant fixative properties provided by Zinc. Additionally, it preserves the immunoreactivity of tissue antigens better than 10% NBF alone. This is an excellent fixative for all tissues processed in the histology laboratory. It is buffered to improve staining by H&E. All fixation, processing and staining times remain the same.

ITEM NUMBER	QTY
ZFM-100	1 gal
ZFM-400	4 gal / case
ZFM-500	5 gal cube



10% Neutral Buffered Formalin

10% Neutral Buffered Formalin is a non-coagulative additive fixative. It is the standard fixative used in most laboratories, and it produces the set of histologic artifacts that Pathologists are trained to interpret professionally. 10% Neutral Buffered Formalin penetrates quickly, but fixes slowly. When used as a primary fixative and followed by secondary fixation by alcohol, it produces a marvelous set of consistent histologic artifacts and results. Our formulation is enhanced by buffering capacity that optimizes histologic results by light microscopy and immunohistochemistry.

ITEM NUMBER	DESCRIPTION	QTY
NBF-101	10% NBF	1 gal
NBF-104	10% NBF	4 gal / case
NBF-105	10% NBF	5 gal cube
NBF-401	10% NBF 4:1 Concentrate	1 gal
NBF-404	10% NBF 4:1 Concentrate	4 gal / case
NBF-405	10% NBF 4:1 Concentrate 5 gallon	5 gal cube



10% Neutral Buffered Formalin Concentrate

10% Neutral Buffered Formalin 4:1 Concentrate is formulated to mix with water to produce 10% Neutral Buffered Formalin. One gallon of concentrate is mixed with four gallons of water to make five gallons of 10% Neutral Buffered Formalin. This product allows histologists to avoid the exposure of hazardous conditions caused by weighing and blending reagents in a busy laboratory.

Uni Fix Ultra

Uni Fix Ultra is a general fixative designed to replace formal-dehyde based fixatives in the histology laboratory. This fixative produces histologic results similar to 10% NBF and is buffered to produce optimum staining with hematoxylin and eosin. Uni Fix Ultra has taken it one step further and is compatible with immunohistochemical procedures. The rates of penetration and fixation of Uni Fix Ultra are very similar to that of 10% NBF, making changes in procedure unnecessary.

ITEM NUMBER	QTY
UFU-100	1 gal
UFU-400	4 gal / case



Tissue Marking Dyes

These brilliant inks are reliable and safe to use. The pigments immediately bond to tissue surfaces without any drying or waiting time and are preserved throughout tissue processing and staining. The Epic Scientific Tissue Marking Dyes are available in two and eight ounce bottles and come in seven different colors: black, blue, green, red, orange, yellow and violet.

ITEM NUMBER	COLOR	QTY
TDB-02	Blue	2 ounce
TDB-08	Blue	8 ounce
TDBK-02	Black	2 ounce
TDBK-08	Black	8 ounce
TDG-02	Green	2 ounce
TDG-08	Green	8 ounce
TDO-02	Orange	2 ounce
TDO-08	Orange	8 ounce
TDR-02	Red	2 ounce
TDR-08	Red	8 ounce
TDV-02	Violet	2 ounce
TDV-08	Violet	8 ounce
TDY-02	Yellow	2 ounce
TDY-08	Yellow	8 ounce
TDK-02	Kit All Colors	7 / 2 ounce
TDK-08	Kit All Colors	7 / 8 ounce



Epi-Mount

Mounting Medium is designed to be used with staining procedures using xylene as a clearing agent. Epic Mounting Medium has an antioxidant included to prevent fading of standard hematoxylin and eosin stains. It is miscible with all routine clearing agents, has an optimum refractive index for viewing and photo microscopy, and will not yellow with age.

Offered in Toluene and Xylene based

ITEM NUMBER	DESCRIPTION	QTY
MT-061	Toluene Based	60 ml
MT-120	Toluene Based	120 ml
MX-060	Xylene Based	60 ml
MX-120	Xylene Based	120 ml



Frozen Section Medium

Frozen Section Medium is the mounting medium of choice for cryostat sections. It is a freezing medium designed to support tissue blocks in preparing cryostat sections of frozen specimens. It is formulated to promote rapid freezing and to enhance sectioning of the specimen. Cryostat sections from tissues embedded in Frozen Section Medium are thin and uniform. It sections smoothly and evenly with a firm and consistent quality. It dissolves readily without residue following immersion of the section in the fixative of choice or in water.

ITEM NUMBER	QTY
FSM-001	4 oz

Epi-Cool

Quickly lowers the temperature to -60F (-15C). The economical, non-flammable and ultra-pure formula leaves no residue and contains no ozone depleting compounds (CFC and HCFC free).

ITEM NUMBER	QTY
EPICO-001	1 bottle
EPICO-012	case/12 bottles



Low Profile Microtome Blades

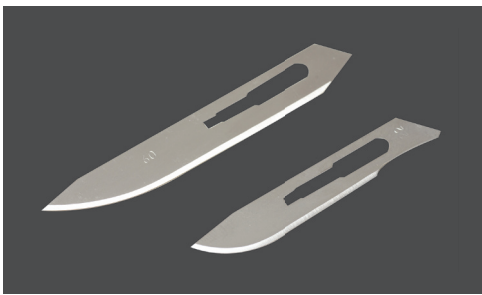
Epic Scientific offers disposable low profile Super Microtome blades that are specifically designed to eliminate chattering and distortion while providing a superior ribbon. Reliably sharp and uniformly consistent, the Epic Scientific disposable Microtome blade delivers the kind of microtome performance you depend on for quality results. Capable of sectioning tissue for biopsies in ultra- thin sections, the low profile Super Microtome blades give you unsurpassed precision and consistency in the lab. *Call for a sample*

ITEM NUMBER	DESCRIPTION	QTY
MB-24	#24	500 blades
MB-52	#52	500 blades
MB-60	#60	500 blades
MB-67	#67	500 blades
MB-69	#69	500 blades



Grossing Blades

We carry a wide range of all purpose blades for specimen grossing. All blades are non-sterile and constructed out of high grade, tempered surgical steel. *Call for a sample*



ITEM NUMBER	DESCRIPTION	QTY
GB-21	#21	100/bx
GB-22	#22	100/bx
GB-23	#23	100/bx
GB-40	#40	100/bx
GB-60	#60	100/bx
GB-70	#70	100/bx

Specimen Bags

Epic Scientific's three-walled 6" x 9" polyethylene bags are made to comply with OSHA standards and include a document pouch (pocket) to protect related paperwork. Our Specimen Bags come with:

- Two Separate Compartments.
- Tear Zone For Quick Access.
- Imprinted With International Biohazard Symbol.
- Zipper Allows Repeated Access to Specimen.
- Made of 2 Mil Polyethylene.

ITEM NUMBER	SIZE	QTY
SB-1000	6x9	1000



Marking Pens

These specially formulated pens are designed to make labeling your slides and cassettes trouble-free. Each pen marks uniformly and securely adheres on glass slides and cassettes. The quick drying permanent ink is solvent resistant. Pens come packaged 10 pens per box.

Call for a sample

ITEM NUMBER	COLOR	QTY
MP-10	Black	10 / box



Epic-Dot Pen

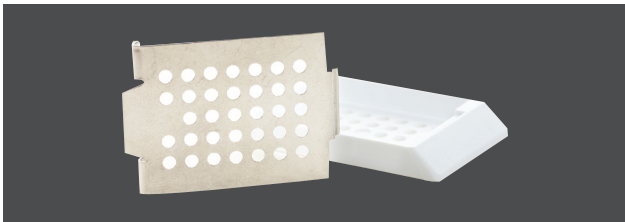
Epic-Dot Pens are pens with special characteristics for cytology. The tip is beveled to a precise point designed for ink application on glass slides. The ink line applied is the perfect width and water proof. This is the pen for routine dotting and marking on slides. Epic-Dot pens are offered in a variety of colors. *Call for a sample*

ITEM NUMBER	COLOR	QTY
DP-1	Black	1
DP-2	Blue	1
DP-3	Green	1
DP-4	Red	1



Cassettes

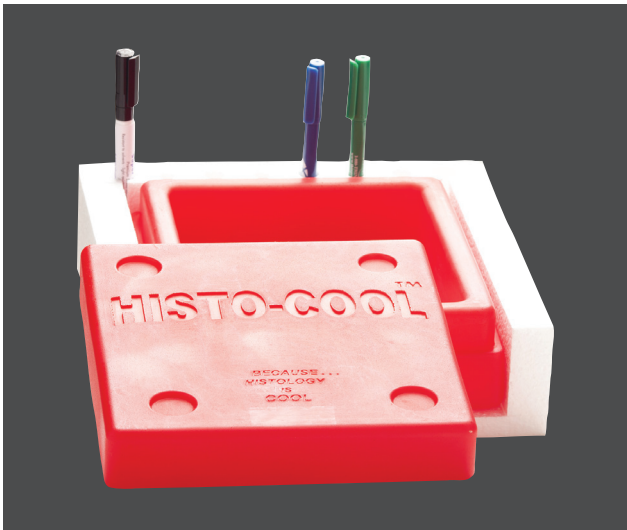
We offer an entire line of cassettes. Call for more information for your specific needs or for a sample.



Histo-Cool – Because “Histology is Cool”

The Histo-Cool was designed to help keep ice frozen throughout the day thus minimizing the need for histology personnel having to go to the freezer and hope there are spare ice trays available. In many instances those frozen ice trays are just not there. The Histo-Cool is designed for as much convenience as it is function. Available in two sizes, Red which holds 20 blocks and Blue which holds 30 blocks.

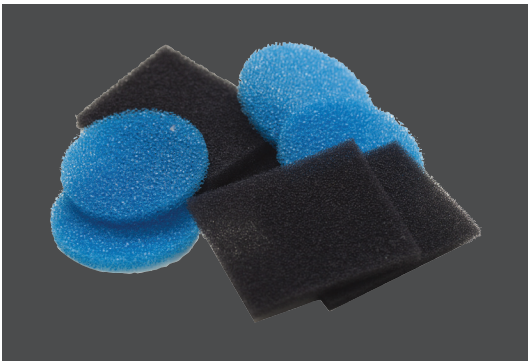
ITEM NUMBER	CAPACITY	COLOR
RHC-001	20 blocks	Red
BHC-001	30 blocks	Blue



BiopsyFoam Pads: Blue & Black Sponges

Foam pads are used to hold biopsies in place and prevent them from being lost during processing. They are made of specially formulated foam, designed for optimum solvent flow. Ideal for keeping track of hard to see biopsy specimens. *Call for a sample*

ITEM NUMBER	SIZE	COLOR	QTY
BS-290	1x1	Blue	1000
BS-292	1x1	Black	1000



Slide Folder

Our sturdy cardboard slide folders hold standard slides (75x25mm and 3x1"). The horizontal compartments are recessed to protect the specimens when the cover is closed. Features hinged doors, a slide index on the outside cover and a thumb cut for easy slide removal. We offer 1, 2 and 20 slide holders.

ITEM NUMBER	CAPACITY	QTY
SF-1	1 slide	25 folders
SF-2	2 slides	36 folders
SF-20	20 slides	72 folders



Plastic 5 Slide Mailers

This standard 5 slide container is ideal for shipping, storing, or staining of slides. The inside walls feature slotted channels to keep slides separated and to make removal easier. The end snap lid closes securely and allows this container to be multi-use. Available in packs of clear and assorted colors: yellow, red, blue, purple and orange.

Call for a sample

ITEM NUMBER	COLOR	QTY
SV-5C	Clear	25 vials
SV-5A	Assorted	25 vials



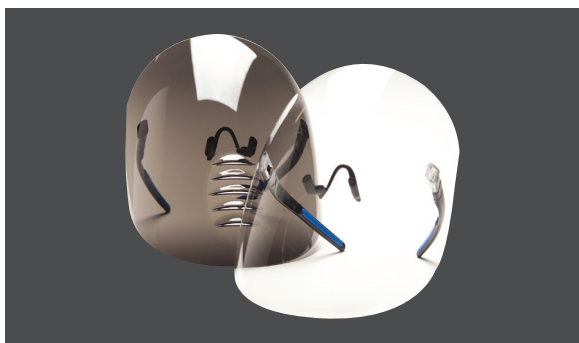
Safety Cube

Reduce the risk of drips, drops and spills. The Safety Cube is the easiest and safest method to fill smaller containers. No more dripping spigots from five gallon cubes hanging over the edge of the counter. No more balancing the container being filled with one hand while turning the spigot on with the other hand. The Safety Cube also comes equipped with a liquid detection alarm to immediately signal accidental spills.

ITEM NUMBER	DESCRIPTION
STC-001	Safety Cube

Gloves

We offer an entire line of gloves. Call for more information for your specific needs.



Face Shield

The Epic Scientific Face Shields are comfortable, light-weight and secure. Worn like safety glasses, they provide a shatterproof barrier. Constructed of the finest polycarbonate, the lens is hard coated and anti-fog coated. Our Face Shields are impervious to fluid penetration and protect your eyes and face from dangerous airborne fragments and biohazards, chemical splashes, splatters and more. Designed to wrap around and grip the back of the wearer's ear area, away from sensitive temple pressure points, these shields are comfortable to wear all day. These Face Shields significantly reduce the risks associated with everyday lab tasks. Available in clear and tinted and solid or vented.

ITEM NUMBER	DESCRIPTION
FSC-01	Clear
FSC-02	Clear/vented
FST-11	Tinted
FST-12	Tinted/vented



Fan Pads

Extremely absorbent pads, are specially treated for the Epic annihilation of Formaldehyde, 10% NBF and glutaraldehyde solutions. These pads help to eliminate hazardous vapors and odors. Effective moist or dry, these pads are excellent vapor control anywhere. Also available in a thicker "diaper" style pad. *Call for a sample*

ITEM NUMBER	DESCRIPTION	QTY
FPC-001	Roll Case	6 rolls
FPDP-001	Diaper Pack	30

Epic Soap

Epic Soap is specially formulated for the sensitive skin of today's healthcare professionals. It is a highly effective broad-spectrum antimicrobial that is harsh enough to kill nasty germs but gentle enough to leave skin soft and smooth. Light mint scent.

Call for a sample

ITEM NUMBER	DESCRIPTION	QTY
SP-301	16 ounce	1 bottle
SP-302	case	12/16 oz bottles
SP-303	Refill	1 gal



Epic Sani

The Epic Scientific Instant Foam Hand Sanitizer is based on the active ingredient Benzalkonium Chlorid. Its' non-drying formula moisturizes and conditions your skin. Epic Instant Foam Hand Sanitizer kills 99.9% of most common germs that may cause illness, including E. Coli and MRSA (Methicillin Resistant Staphylococcus Aureus).

Call for a sample

ITEM NUMBER	DESCRIPTION	CASE QTY
SP-313	18 ounce	1 bottle
SP-314	case	12/18 oz bottles
SP-315	Refill	1 gal

Epic Wash

Residues that interfere with laboratory procedures can be the enemy in attaining reliable results. It's difficult to find a laboratory glassware cleaner that can handle those tough jobs without etching, clouding or otherwise damaging expensive lab ware equipment. Epic Wash not only removes interfering residues without deterioration of equipment, but also takes care of tough laboratory cleaning problems. Excellent for removal of protein soils, tissue, blood, and body fluids from glassware, metals, plastic, ceramic, porcelain, rubber, and fiberglass. Leaves no interfering residues behind. **Call for a sample**

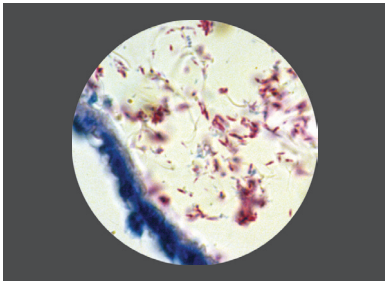
ITEM NUMBER	QTY
SP-326	1 gallon
SP-327	5 gallon cube



Acid Fast Bacilli Stain Kit

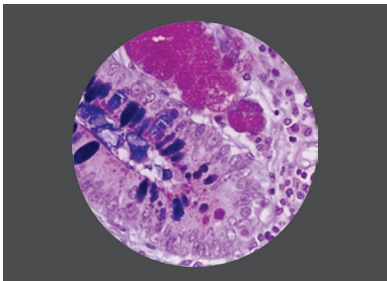
Acid Fast Bacilli Stain Kit, used to identify if acid fast bacilli are present in tissue sections. Our Acid Fast Bacilli Stain Kit produces vivid staining while also limiting background. Background is stained pale blue and Acid Fast Bacilli are stained dark red.

ITEM NUMBER	DESCRIPTION	UOM
ST-3103	Acid Fast Bacilli (AFB) Stain Kit	1 ea
Components		
ST-3104	Carbol Fuchsin	500 ml
ST-3105	1% Acid Alcohol	500 ml
ST-3106	Methylene Blue Stock	500 ml



Alcian Blue/PAS Stain Kit

Alcian Blue/PAS Stain Kit is used to identify and differentiate neutral and acetic mucosubstances, most often used on GI tissue. Our Alcian Blue/PAS Stain Kit produces pronounced staining. It stains acid mucosubstances blue and neutral polysaccharides magenta to pink.

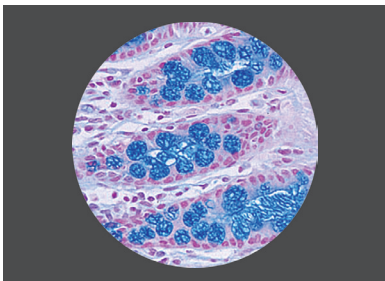


ITEM NUMBER	DESCRIPTION	UOM
ST-3056	Alcian Blue/PAS Stain Kit	1 ea
Components		
ST-3058	1% Alcian Blue	250 ml
ST-3059	1% Lithium Carbonate	250 ml
ST-3060	1% Periodic Acid	250 ml
ST-3061	Shiff Reagent	250 ml

Alcian Blue pH 2.5 Stain Kit

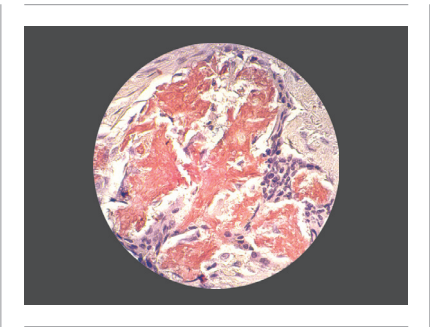
Alcian Blue Stain Kit is used in staining acid mucosubstances and acetic mucins. Our Alcian Blue is formulated with a pH at 2.5 producing excellent staining, which stains acid mucins and mucosubstances blue.

ITEM NUMBER	DESCRIPTION	UOM
ST-3013	Alcian Blue Stain Kit	1 ea
Components		
ST-3015	1% Alcian Blue	500 ml
ST-3016	1% Lithium Carbonate	250 ml
ST-3014	3% Clacial Acetic Acid	250 ml



Amyloid Stain Kit

Amyloid Stain Kit is a metachromatic stain used to detect amyloid proteins in tissues. The pretreatment solutions intensifies staining producing orange to red staining of the amyloid protein and a apple green color with polarized microscopy.

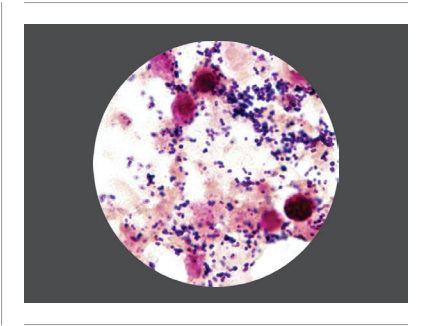


ITEM NUMBER	DESCRIPTION	UOM
ST-3110	Amyloid Stain Kit	1 ea
Components		
ST-3111	1% Alcian Blue	10 ml
ST-3112	1% Lithium Carbonate	500 ml
ST-3113	1% Periodic Acid	500 ml

Brown & Brenn Stain Kit

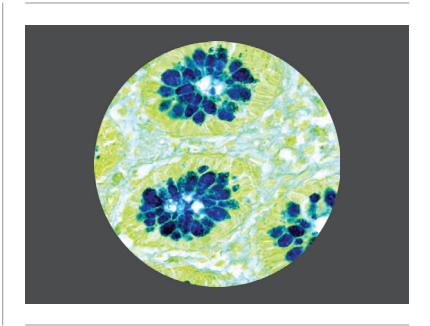
Brown & Brenn is a gram stain for paraffin sections that differentiates gram-positive organisms from gram-negative ones and also differentially stains gram-negative micro-organisms. Gram-positive organisms stain blue/black, and gram-negative organisms stain red; tissue components stain yellow.

ITEM NUMBER	DESCRIPTION	UOM
ST-3017	Brown & Brenn Stain Kit	1 ea
Components		
ST-3018	1% Crystal Violet Stock	250 ml
ST-3019	5% Sodium Biocarbonate	100 ml
ST-3020	Gram’s Iodine	250 ml
ST-3021	Ether/Acetone Solution	250 ml
ST-3022	0.25% Stock Basic Fuchsin	250 ml
ST-3023	0.1% Picric Acid/Acetone Solution	250 ml



Colloidal Iron Stain Kit

Colloidal Iron Stain Kit is used to demonstrate carboxylated and sulfated mucopolysaccharides and glycoproteins. Our Colloidal Iron Stain Kit stains acid mucopolysaccharides and sialomucins deep blue. Nuclei stain pink to red and cytoplasm stains pink.

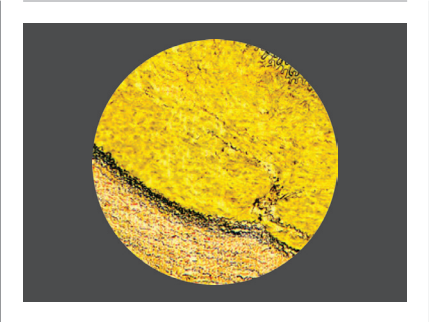


ITEM NUMBER	DESCRIPTION	UOM
ST-3024	Colloidal Iron Stain Kit	1 ea
Components		
ST-3025	Walpole’s Acetic Acid-Acetate Buffer 0.2M	250 ml
ST-3026	Stock Colloidal Iron Solution	250 ml
ST-3027	12% Acetic Acid	250 ml
ST-3028	Working 2% Potassium Ferrocyanide/HCl	250 ml
ST-3029	Solution A (Hematoxylin)	250 ml
ST-3030	Solution B (Ferric Chloride)	250 ml
ST-3031	Van Gieson’s Solution	250 ml

Elastic Stain Kit

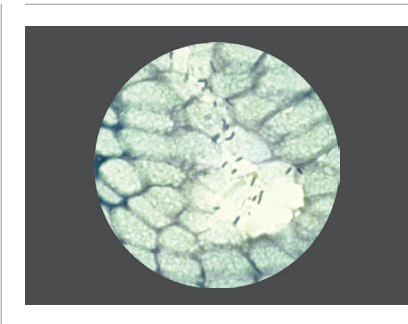
Elastic Stain Kit is used to demonstrate elastic fibers. Elastic fibers and nuclei are stained blue/black; collagen is stained red, and other tissues stain yellow.

ITEM NUMBER	DESCRIPTION	UOM
ST-3120	Elastic Stain Kit	1 ea
Components		
ST-3121	5% Hematoxylin	250 ml
ST-3122	10% Ferric Chloride	250 ml
ST-3123	Weigert's Iodine	250 ml
ST-3124	Sodium Thiosulfate	500 ml
ST-3125	Van Gieson's Stain	500 ml



Giemsa Helicobacter Pylori Stain Kit

Giemsa Stain Kit (H. pylori) is a Romanowsky stain to identify H. pylori in tissue sections. This kit produces darkly stained H. pylori with minimum background staining. Epithelial cell cytoplasm is transparent at the supranuclear portion of cells, and epithelial gastric mucin is pink. This stain provides a clear background against which H. pylori can be clearly identified.

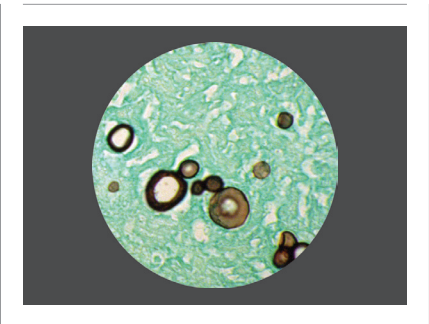


ITEM NUMBER	DESCRIPTION	UOM
ST-5529	Giemsa Stain Kit (H. pylori)	1 ea
Components		
ST-5524	Counter Stain	250 ml
ST-5525	Methylene Blue Stain	250 ml
ST-5526	Buffer Solution	500 ml
ST-5527	Methylene Blue Stain	250 ml
ST-5528	Secondary Counter Stain	250 ml

GMS Fungus Stain Kit

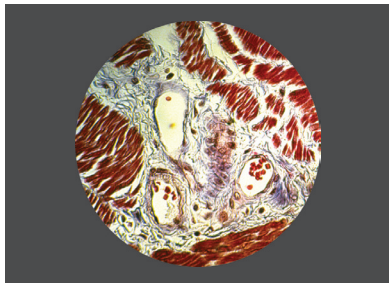
GMS (Grocott's Methenamine Silver) Fungus Stain Kit is a modified silver stain used to distinguish fungi, basement membranes and opportunistic organisms. Grocott's Methenamine Silver Stain Kit improves the detection of fungus organisms, Pheumocystis carinii, and Histoplasma. Fungus and Pneumocystis carinii stain black. Mucin appears taupe to dark gray. Inner parts of mycelia and hyphae are rose; background color is pale green.

ITEM NUMBER	DESCRIPTION	UOM
ST-3041	GMS Fungus Stain Kit	1 ea
Components		
ST-3042	4% Chromic Acid	500 ml
ST-3047	1% Sodium Bisulfite	500 ml
ST-3050	5% Sodium Thiosulfate	500 ml
ST-3051	0.2% Light Green	500 ml
ST-3045	5% Borax Solution	250 ml
ST-3046	Stock Methenamine-Silver Nitrate	250 ml
ST-3049	0.1% Gold Chloride	250 ml



Masson's Trichrome Stain Kit

Masson's Trichrome Stain Kit is used to differentiate collagen in connective tissue from smooth muscle. Our Trichrome Kit stains nuclei black, cytoplasm, muscle and erythrocytes red, and collagen blue.

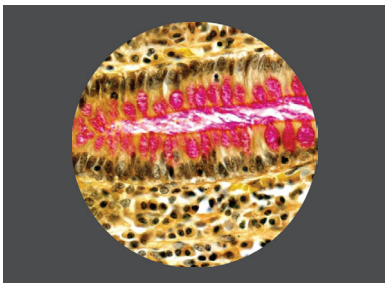


ITEM NUMBER	DESCRIPTION	UOM
ST-8400	Masson's Trichrome Stain Kit	1 ea
Components		
ST-8401	Weigert's Iron Hematoxylin Sol. A	250 ml
ST-8402	Weigert's Iron Hematoxylin Sol. B	250 ml
ST-8403	Biebrich Scarlet/Acid Fuchsin	250 ml
ST-8404	Phosphomolybic/Phosphotungstic Acid Solution	250 ml
ST-8405	Bouin's Solution	250 ml
ST-8406	Aniline Blue	250 ml
ST-8407	1% Glacial Acetic Acid	250 ml

Mucicarmine Stain Kit

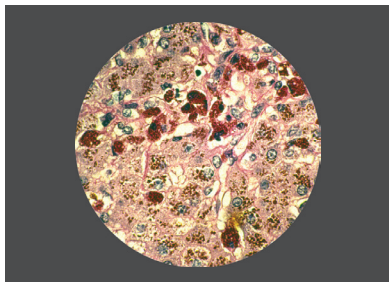
Mucicarmine Stain Kit distinguishes mucin-positive epithelial cells from non mucin producing cells. It also stains certain carbohydrates red, such as the capsule of Cryptococcus neoformans. Nuclei stain black; other tissue elements stain light green.

ITEM NUMBER	DESCRIPTION	UOM
ST-3068	Mucicarmine Stain Kit	1 ea
Components		
ST-3069	Weigert's Hematoxylin	500 ml
ST-3072	Stock Mucicarmine	125 ml
ST-3073	Stock Light Green	500 ml



Periodic Acid Schiff Stain Kit

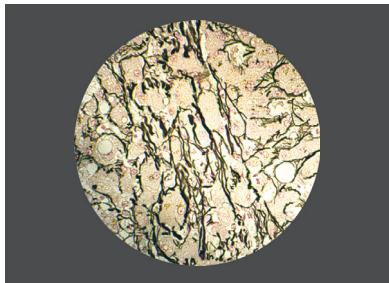
Periodic Acid Schiff (PAS) Stain Kit is used as a routine stain for liver and kidney biopsies. It identifies the presence and the pattern of specific carbohydrates of mucin, basement membranes, fungus and glycogen. Fungus and glycogen stain magenta while nuclei stain blue.



ITEM NUMBER	DESCRIPTION	UOM
ST-3062	Periodic Acid Schiff (PAS) Stain Kit	1 ea
Components		
ST-3063	Schiff Reagent	250 ml
ST-3064	1% Periodic Acid	250 ml

Reticulum Stain Kit

Reticulum Stain Kit demonstrates reticular fibers abundant in liver, spleen and kidney. The silver solution impregnates reticulum and stains them black. Nuclei and background tissue stains red.

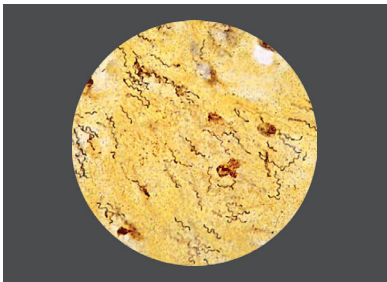


ITEM NUMBER	DESCRIPTION	UOM
ST-3079	Reticulum Stain Kit	1 ea
Components		
ST-3080	Acidified Permanganate Solution	250 ml
ST-3081	Oxalic Acid	250 ml
ST-3082	Aqueous Ferric Ammonium Sulfate	250 ml
ST-3083	Wilder's Silver Bath	250 ml
ST-3084	10% Neutral Buffered Formalin	250 ml
ST-3085	0.2% Gold Chloride	100 ml
ST-3086	5% Sodium Thiosulfate	100 ml
ST-3087	Nuclear Fast Red	250 ml

Steiner & Steiner Stain Kit

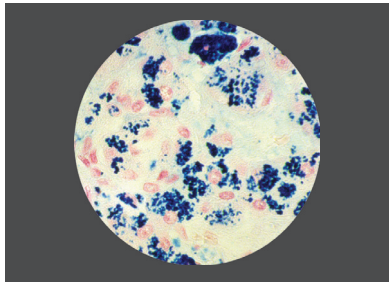
The Steiner & Steiner Stain Kit identifies spirochetes and non-filamentous bacteria in paraffin embedded tissues. Spirochetes and other non-filamentous bacteria stain dark brown to black. Background tissue stains bright yellow to light brown.

ITEM NUMBER	DESCRIPTION	UOM
ST-3130	Steiner & Steiner Stain Kit	1 ea
Components		
ST-3131	Spirochete Sensitizer	500 ml
ST-3132	1% Silver Nitrate	500 ml
ST-3133	2% Gum Mastic	500 ml
ST-3134	Hydroquinone	0.5g (10/pk)



Tissue Iron Stain Kit

Tissue Iron Stain Kit demonstrates ferric iron in tissues. Pathologic changes in tissues from patients with hemochromatosis, marked iron deficiency anemia and hemosiderosis are often analyzed with this staining method. Our Tissue Iron Stain Kit produces a Prussian blue color of iron deposited in tissues. Nuclei and background stain shades of pink.



ITEM NUMBER	DESCRIPTION	UOM
ST-3036	Tissue Iron Stain Kit	1 ea
Components		
ST-3037	20% Hydrochloric Acid	250 ml
ST-3038	10% Potassium Ferrocyanide	250 ml
ST-3040	Nuclear Fast Red	125 ml

SlydEater

Creative Waste Solutions, Inc. and S&G Enterprises, Inc. bring to your lab the SlydEater. An all-in-one solution to eliminate the cost and hassle of microscope slide disposal! Designed for small and large users, the SlydEater is the easy solution to slide disposal. Why do labs dispose of slides as "red bag" waste? Because that's what they're used to doing with patient waste. More importantly, the slides contain confidential lab and patient information that may remain intact even after the slides are disposed. Now labs can use the SlydEater to quickly and easily destroy both slides and identification label in one quick, easy step. The SlydEater also shreds paraffin blocks; rendering the specimen unrecognizable and enabling the waste to go into the trash.

Operators load 300-400 slides into the SlydEater and they are quickly pulverizing the slides and shredding the labels. The crushed remnants drop into a discrete corrugated box inside the SlydEater. A flashing indicator light tells the operator when the box is full, after which the box is closed and thrown away as solid waste.



Vyleater

Creative Waste Solutions, Inc. and S&G Enterprises, Inc., have come together to bring your laboratory the Vyleater. Destroy small vials by crushing and separating the liquid contents reducing the overall cost of product disposal. Separate the liquid automatically as the Vyleater sends plastic or glass vial fragments to one destination while what used to be inside... goes to another. Specimen disposal is easier for laboratories by allowing the Vyleater to not only collect the liquid for disposal but also destroy any identifying marks on the containers. This product can be customized to fit your specific laboratory needs.



ITEM NUMBER	DESCRIPTION
SLE-001	Slydeater
VLE-001	Vyleater

Phone: 888-795-8300
Fax: 503-963-8047

PHONE: 888-795-8300



FAX: 503-963-8047



EMAIL: CWSINCORP.COM



10848 SW Tualatin Sherwood Road
Tualatin, OR 97062
www.cwsincorp.com

Phone: 888-795-8300
Fax: 503-963-8047

